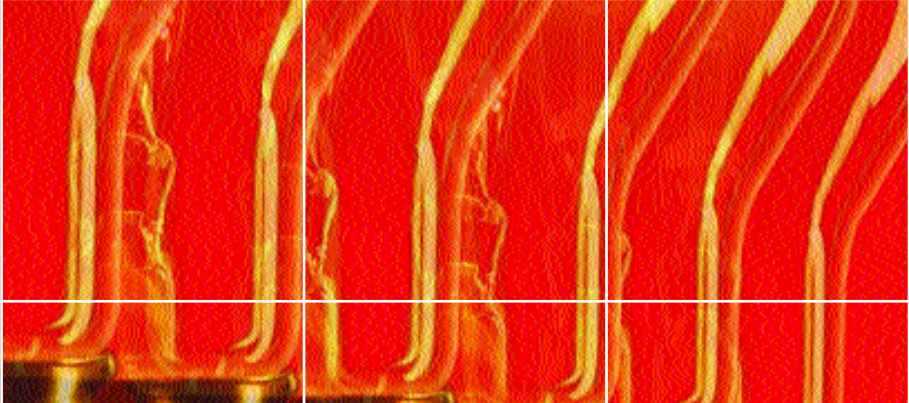


HORN ELECTRODE HOLDERS

Great ideas based on reliable quality



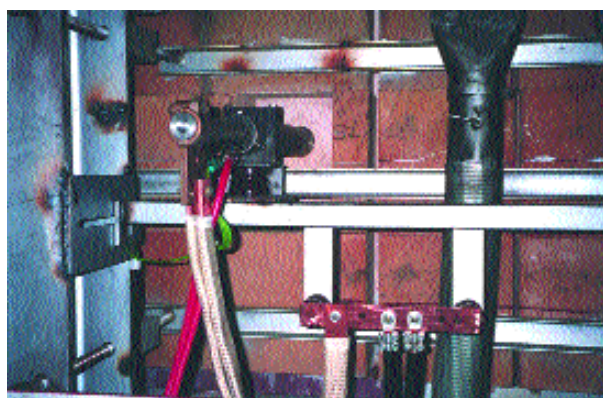
HORN
GLASS INDUSTRIES
innovation
ENGINEERED IN GERMANY

ELECTRODE HOLDERS

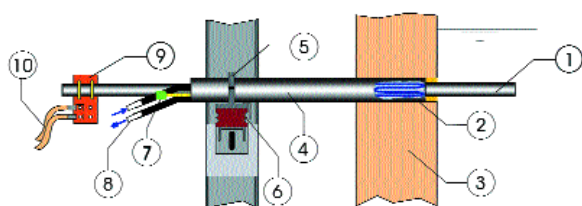
Reliable and high-quality electrode holders are the basis for safe operation of a boosting system. HORN offers electrode holders for Molybdenum and for tin oxide electrodes.

For horizontal and vertical installation HORN offer Molybdenum electrode holders which avoid local overheating by means of a special water guide system in the electrode holder and feature a proven long life.

In order to increase operational safety a thermocouple for temperature control is integrated in the electrode holder head.



Side electrode holder



Installation of a side wall-electrode

KEY:

- | | |
|---------------------------------------|----------------------------------|
| 1. Molybdenum Electrode 2" | 6. Isolator |
| 2. Cooling circuit (inside of holder) | 7. Thermocouple NiCr-Ni |
| 3. Fused cast block | 8. Cooling water connection 1/4" |
| 4. Electrode holder 2" | 9. Electrode conductor bar |
| 5. Electrode clamp for carrier | 10. Flexible cable set |

HORN supply various sizes of Mo electrode holders:

Molybdenum Electrode Diameter				
mm	32	51	64	76
Inch	1 1/4	2,0	2,5	3,0

Other dimensions on request

Your Benefits

- Long life thanks to precise manufacture
- Use of high-quality materials
- Special cooling water guide system in the electrode holder head
- Full service – installation also during operation
- Manufacture in our own workshops, guaranteeing highest quality standards

HORN also supplies adjustable tin oxide electrode holders with a special adjusting mechanism.

They are used in electric melting ends with excellent results.

HORN

GLASS INDUSTRIES

HORN GLASS INDUSTRIES AG

Bergstrasse 2 • D-95703 Plössberg • Germany

Tel: +49 (0)96 36/92 04 - 0

Fax: +49 (0) 96 36/92 04 - 10

E-mail: info@hornglas.de • URL: www.hornglas.de